

# MaxFlash™

## Liquid Flashing Membrane

MaxFlash is a one-component elastomeric material for use as a flexible waterproofing flashing membrane for rough openings. MaxFlash offers easy application, even to damp surfaces, and durability in all climates.

### PRODUCT HIGHLIGHTS

- + Can be applied to damp substrates
- + Withstands rainfall immediately after application
- + 180 days UV exposure
- + Fast cure and tack-free time
- + Bonds to a wide range of substrates
- + Does not contain solvents, phthalates or isocyanates

### Color

Dark grey

### APPROXIMATE COVERAGE

- + 28-50 lineal feet of coverage at 4" wide per propack
- + 20-35 square feet of coverage at 12 mils to rough openings

### STORAGE

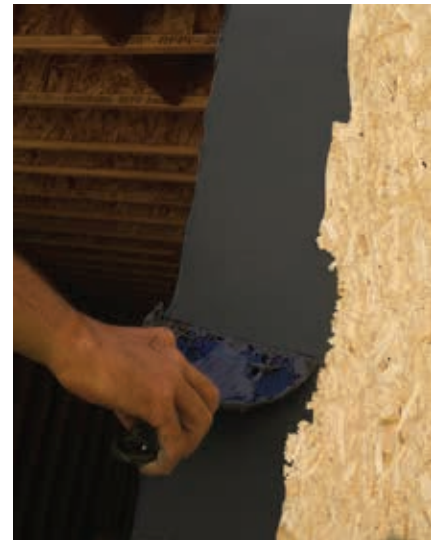
Store in original, unopened containers in a cool, dry place away from sources of heat and direct sunlight at a minimum of 40 deg F. In cold weather, keep containers at room temperature for at least 24 hours before using. Storage at elevated temperatures will reduce shelf life.

### Shelf Life.

1 year when stored in cool, dry conditions away from sources of heat and sunlight.

### PACKAGING

- + 20 oz. propack
- + 20 propacks per case

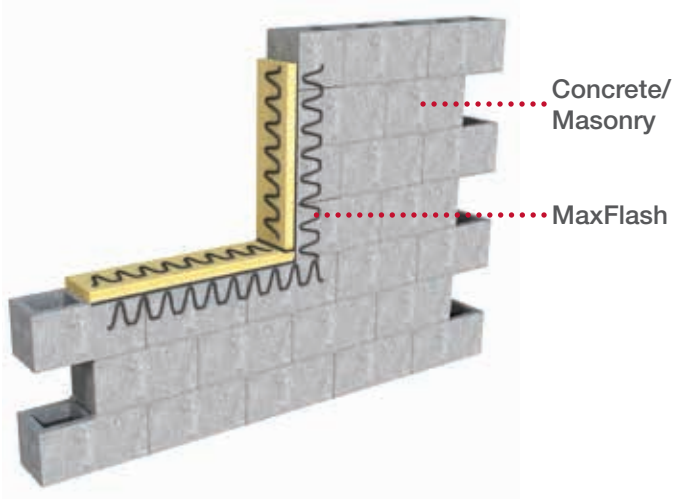


**HP+**™  
Building Enclosure Systems  
FROM BASF

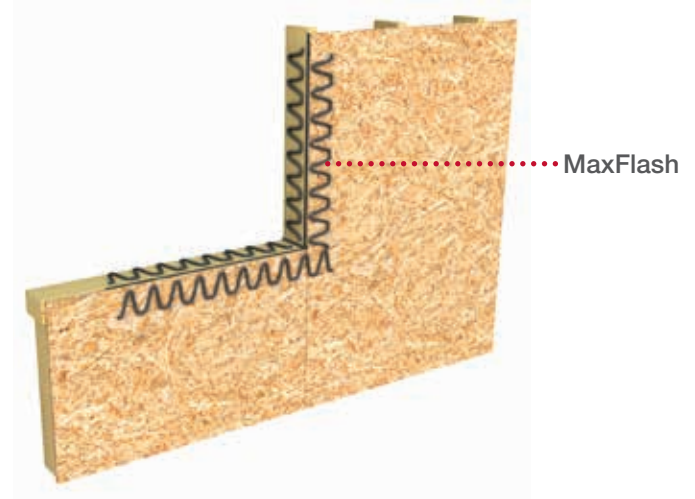
**BASF**  
We create chemistry

# MaxFlash Liquid Flashing Membrane

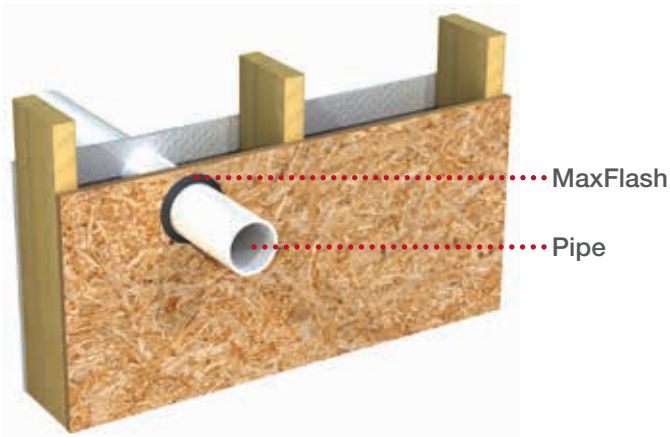
Typical rough opening treatment with MaxFlash on masonry or concrete construction with flush buck



Typical rough opening treatment with MaxFlash on framed construction



Typical pipe penetration



• Maximum 1/2" gap at penetrations.

- ✦ Ensure that MaxFlash is uniformly applied at a 12-20 mil thickness.
- ✦ Extend MaxFlash at least 12-20 mil thickness onto the exterior wall, maintaining 4" (100 mm) width.
- ✦ Allow MaxFlash to skin before applying fluid-applied air/water-resistive barrier.
- ✦ Lap air/water-resistive barrier at least 2" (50 mm) onto MaxFlash, creating a continuous, monolithic air/water resistive barrier.

MaxFlash and HP+™ are trademarks of BASF Corporation.

©2016 BASF Corporation  
BF-10468

For the most current version of this literature, please visit

<http://www.construction.basf.us>